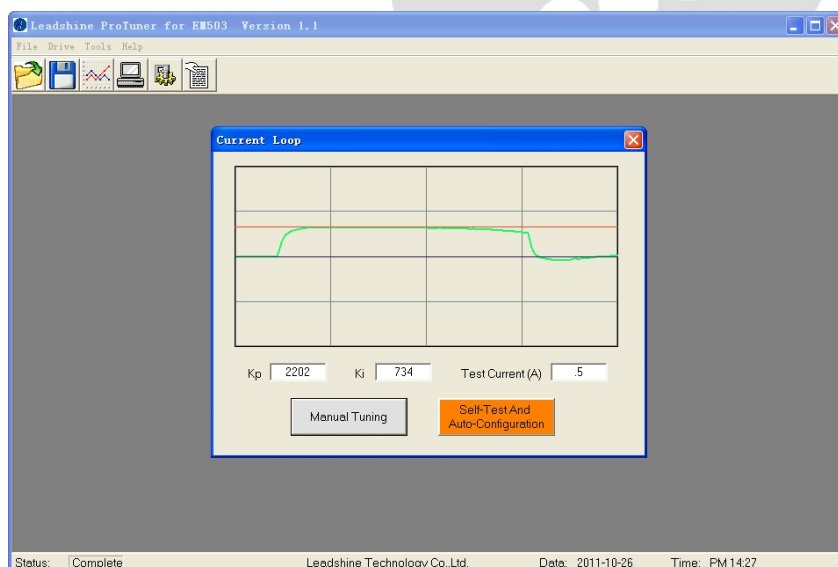


# Software Operational Manual

## for EM Series Stepper Drives



---

Leadshine reserves the right to make changes without further notice to any products herein to improve reliability, function or design. Leadshine does not assume any liability arising out of the application or use of any product or circuit described herein; neither does it convey any license under its patent rights of others.

Leadshine's general policy does not recommend the use of its products in life support or aircraft applications wherein a failure or malfunction of the product may directly threaten life or injury. According to Leadshine's terms and conditions of sales, the user of Leadshine's products in life support or aircraft applications assumes all risks of such use and indemnifies Leadshine against all damages.

©2011 by Leadshine Technology, All Rights Reserved

### Change Log

Revision Date	Changes	Version
2011-10-26	Original Create	SM-EM-R20111026
2015-12-10	Description for Alarm Signal.	SM-EM-R20151210

---

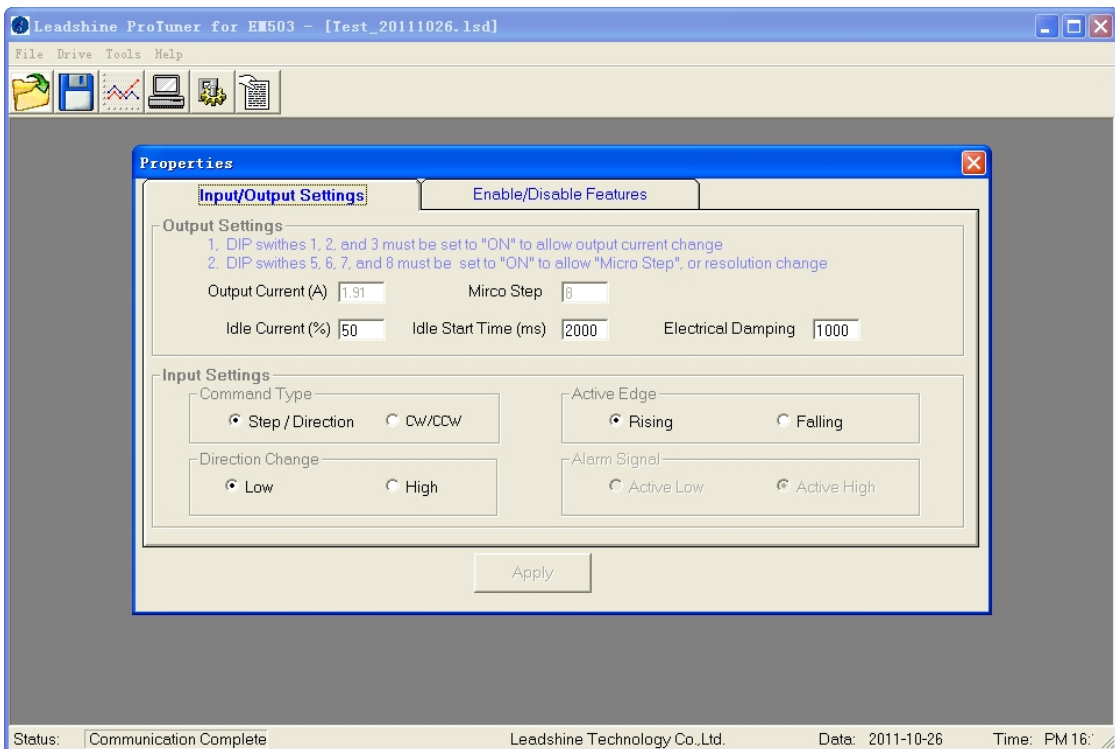
## Table of Contents

<b>Table of Contents</b> .....	iii
Introduction .....	1
Workspace .....	1
Menus and Toolbar .....	1
Using the Software .....	3
Opening a file .....	3
Save a file .....	3
Save as a file .....	3
Close .....	3
Connecting Drive .....	3
Current Loop Tuning Window .....	4
Properties - Input/Output Settings .....	5
Properties - Enable/Disable Features .....	7
Built-in Controller for Self-test .....	8
Error Log Window .....	10
PIN Management Window .....	10
Configuring the Drive .....	11
Set Input/Output Parameters .....	11
Current Loop Tuning .....	12
Anti-resonance Tuning .....	18
Adjusting Electronic Damping .....	18
Contact Us .....	19

## Introduction

The ProTuner is a software tool designed to configure and tune the Leadshine EM series digital stepper drives include EM402, EM503, EM705 and EM806. The user can configure the drive's output current, micro step, electronic damping, command type, tune the current loop and adjust the anti-resonance parameters in this software.

## Workspace




**Menu  
Toolbar**

**Properties  
Window**

### Menus and Toolbar

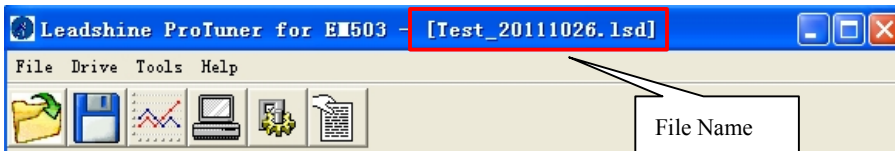
Menus and toolbars are at the top of the workspace. You can click menu bar to view pull-down menu. The toolbar below offers the most frequency used commands.

Menu	Pull Down	Toolbar	Function
File ->	Open		Open a file
	Save		Save a file
	Save As	-	Save as a file
	Close	-	Close the current file
	Exit	-	Exit from the software
Drive ->	Connect To Drive	-	Connect to drive
	Current Loop		Configure current loop parameters $K_p$ and $K_i$ .
	Properties		Set drive properties like output current, Micro Step, command type, electronic damping and active edge.
	Build-in Generator		Configure the built-in pulse generator which is used for anti-resonance tuning and self-test.
	Download to Drive	-	Download data to drive
	Reset Drive	-	Reset drive to factory setting
Tools->	Error Log		Check the drive error log.
	PIN Management	-	Change the drive's PIN
Help->	Hardware Manual on Web	-	Click to view EM drives hardware installation manual.
	Software Manual on Web	-	Click to view EM drives software operational manual.
	Leadshine Home Page	-	Click to visit Leadshine Home Page
	About Leadshine ProTuner	-	Software Information

## Using the Software

### Opening a file

If you want to load the configuration data from a file in the PC, click on the File->Open. The parameters in the software's workspace will be updated. The file name will appear in the title bar.



### Save a file

Click **Drive->Save** to save the data of current workspace to the open file. If there is no file opened, the Save Dialog appears and you can type in the file name then save it.

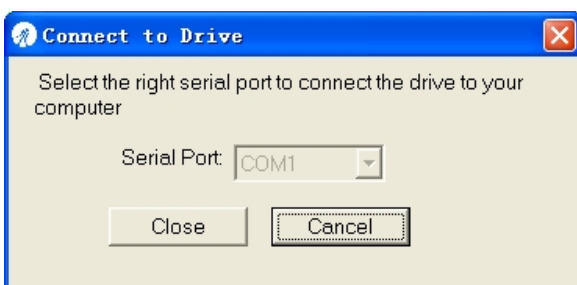
### Save as a file

Click **Drive->Save As** to save the data in current workspace to a file and rename it.

### Close

Click **Drive->Close** to close the current file.

### Connecting Drive



**Connect to Drive** window appears every time you open ProTuner. You can also open it by clicking **Drive->Connect** any time. Select the serial port and click on the **Connect** button. The software will try to connect to the drive and read the settings. It may take several minutes. Please wait.



Before connecting the drive, please make sure:

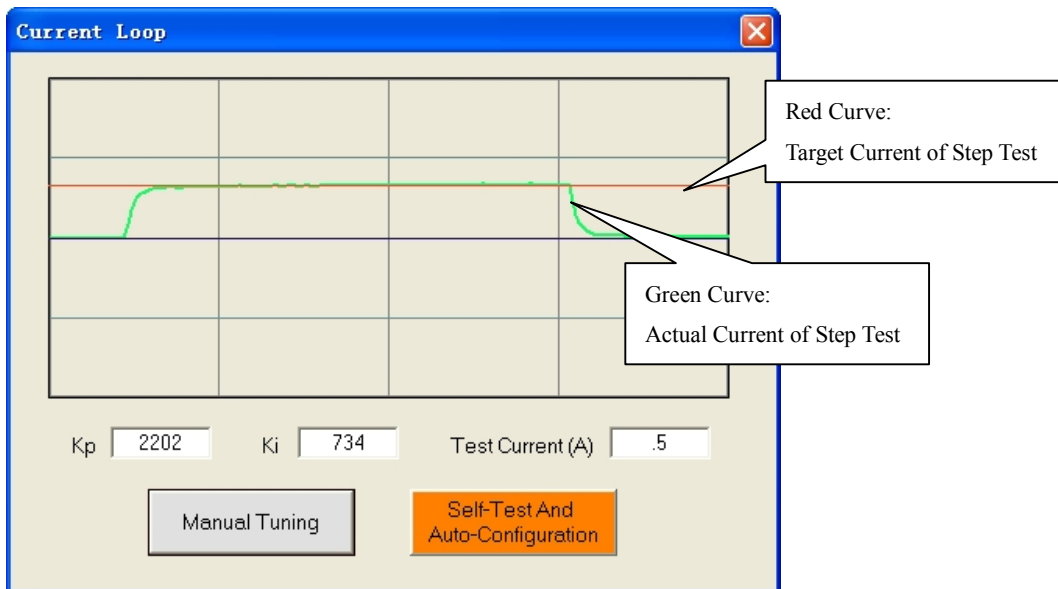
- 1) The RS232 cable has been connected between the drive and PC serial port.
- 2) Power has been applied to the drive and the green LED is turned on.

The motor is no need to connect to the drive if you just want to change the parameters but not tuning.



Do not connect or disconnect serial cable when drive is powered on. The drive's communication circuit may be damaged.

## Current Loop Tuning Window

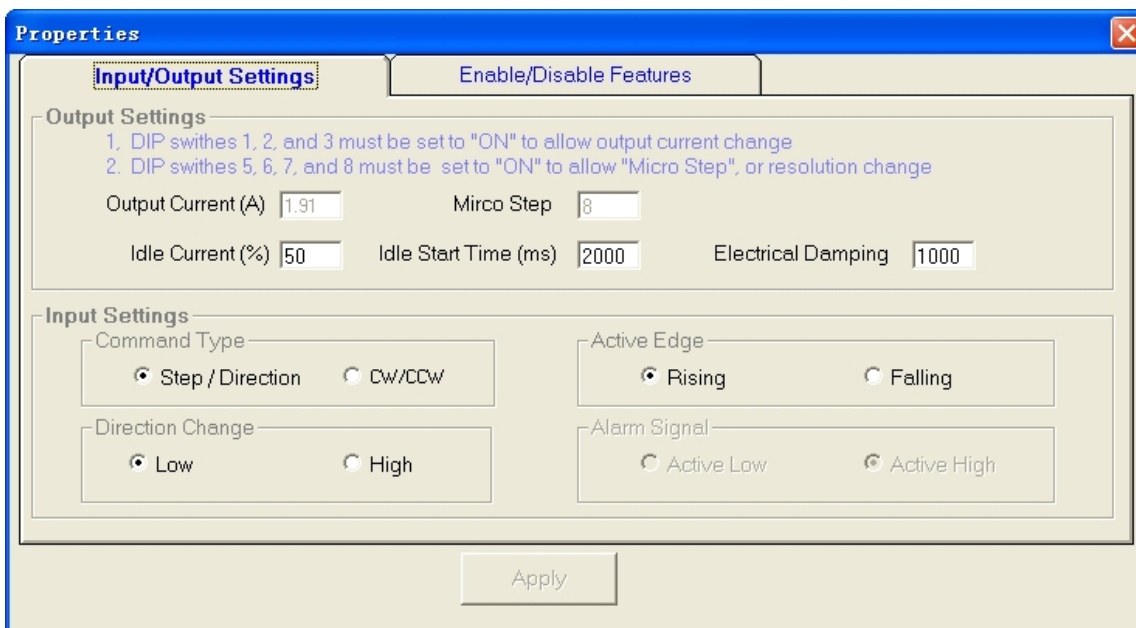


Click **Drive->Current Loop** to open the current loop tuning window. You can adjust the Kp (proportional gain) and Ki (integral gain) in this window. These parameters should be tuned before normal operation.

Item	Description	Range
<b>Kp (Proportional Gain)</b>	Increase Kp to make current rise fast. Proportional Gain determines the response of the drive to current setting command. Low Proportional Gain provides a stable system (doesn't oscillate), has low stiffness, and large current error, causing poor performances in tracking current setting command in each step. Too large Proportional Gain values will cause oscillations and unstable systems.	1 – 65535

<b>Ki (Integral Gain)</b>	Adjust Ki to reduce the steady error. Integral Gain helps the drive to overcome static current errors. A low or zero value for the Integral Gain may have current errors at rest. Increasing the Integral Gain can reduce the error. If the Integral Gain is too large, the systems may “hunt” (oscillate) about the desired position.	1 – 65535
<b>Test Current</b>	The current amplitude for the step response. Let this value not exceed the maximum output current of the drive.	EM402: 0.5 – 2.2A EM503: 0.5 – 4.2A EM705:: 0.5 – 7.0A EM806:: 0.5 – 8.2A
<b>Manual Tuning</b>	Enter Kp and Ki and click this button to activate the test. A target curve (red) and an actual curve (green) will be displayed on the screen for user analysis.	-
<b>Self-test and Auto-configuration</b>	Click this button to activate self-test and auto-configuration. The Kp and Ki will be tuned automatically.	-

## Properties - Input/Output Settings



Click **Drive->Properties** to open the **Properties** window. In the **Input/Output Settings** Tab, the user can set Output Current, Micro Step, Idle Current, Electronic Damping, Pulse Active Edge and Command Type.

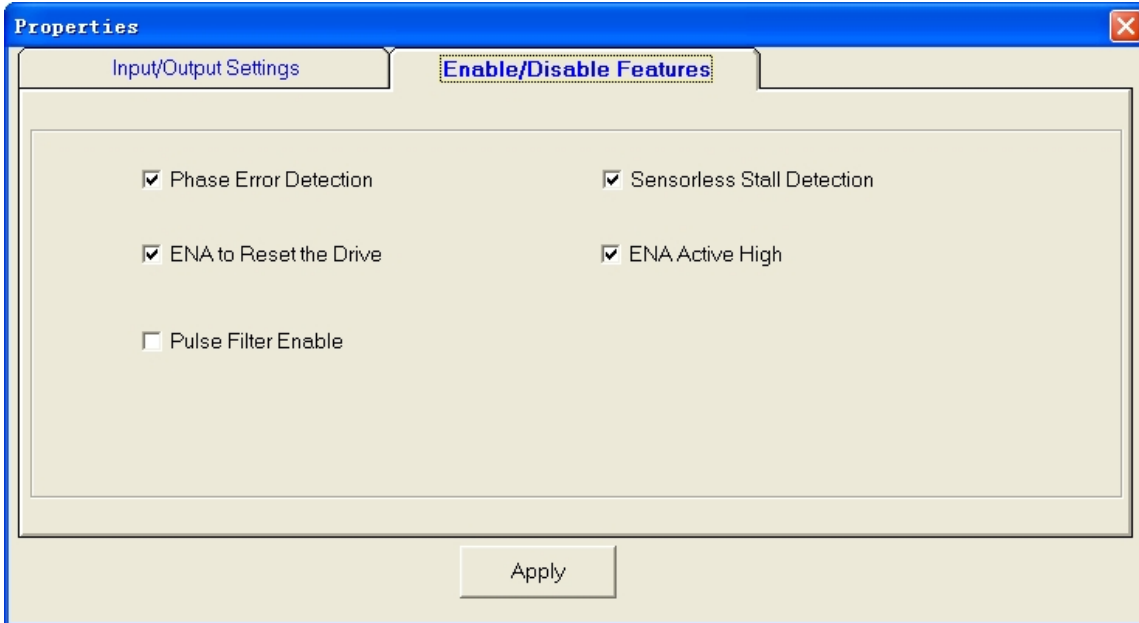


1. DIP switch must be in Default mode (SW1, 2 for EM402 and SW1, 2, 3 for the others) to allow current change.
2. DIP switch must be in Default mode (SW4, 5 for EM402, SW5, 6, 7, 8 for EM503 and EM705, SW5, 6, 7 for EM806) to allow Micro Step change.



Item	Description	Range
<b>Output Current</b>	Drive's output current for the motor. It should be less than 1.4 times of the motor's RMS current/phase. <b>Note:</b> The DIP switch setting must be in default mode as follows to be configured by software. EM402: SW1 = on, SW2 = on EM503, EM705, EM806: SW1 = on, SW2 = on, SW3 = on	EM402: 0.07-2.2A EM503: 0.21-4.2A EM705: 0.35-7.0A EM806: 0.35-8.2A
<b>Micro Step</b>	Drive's Micro Step setting for the motor. <b>Note:</b> The DIP switch setting must be in <b>Default</b> mode as follows to be configured by software. EM402: SW4= on, SW5 = on EM503, EM705: SW5 = on, SW6 = on, SW7 = on, SW8=on EM806: SW5 = on, SW6 = on, SW7 = on	1-512
<b>Idle Current</b>	Idle current at motor stop. The drive goes into idle state when there is no pulse applied to it and the DIP SW3 (EM402), SW4 (The others) is set to OFF.	10%-100%
<b>Idle Start Time</b>	The time when there is no pulse applied to the drive. The drive goes into idle state after this time.	1-5S
<b>Electronic Damping</b>	Adjust this parameter to improve the drive's high speed performance. The optimal value depends on the system.	1-6000
<b>Command Type</b>	Command Type or pulse mode of control signal. Select PUL/DIR or CW/CCW according to command type of motion controller. PUL/DIR means pulse and direction mode; CW/CCW means double pulses mode. (Note: The EM402 and EM806 only support step & direction command.)	PUL/DIR CW/CCW
<b>Active Edge</b>	Pulse active edge. The motor shaft moves one micro step every active edge.	Rising /Following
<b>Direction Change</b>	Change the motor direction. It is only active in PUL/DIR command mode. Please note that the actual direction is also related to the motor coil connection.	(High)Positive /(Low)Negative
<b>Alarm Signal</b>	Set active impedance for the alarm (fault) signal. Active High means high output impedance for drive error and Active Low means low output impedance for driver error. (Note: The Alarm Signal of the EM503 and EM705 can not be configured, fixed at Active Low.)	Active Low /Active High
<b>Apply</b>	Apply Button. Click this button to apply all the changes.	-

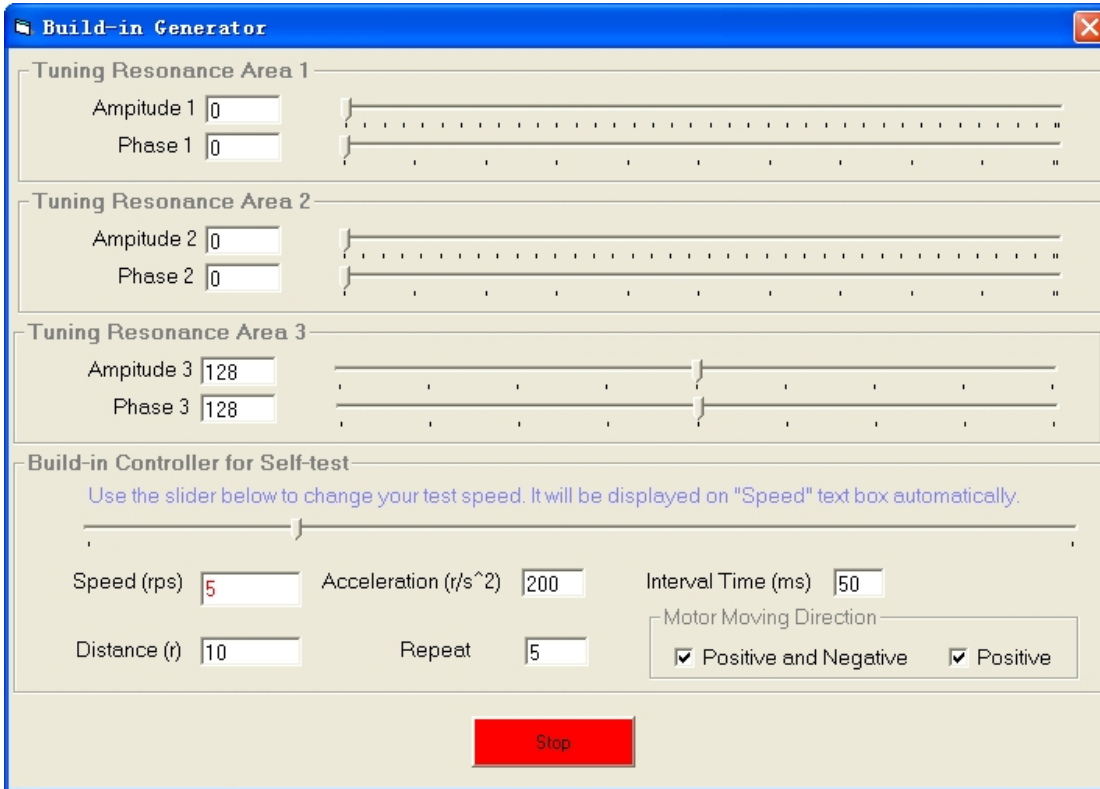
## Properties - Enable/Disable Features



This window offers options of enabling phase error detection, motor stall detection and pulse filter. You can also set the active signal of the enable signal and use it for drive reset to clear the error.

Item	Description
<b>Phase Error Detection</b>	Check it to enable phase error detection which is activated when motor connection is wrong or one of the motor lead is disconnected. The alarm/fault output will be active if it is enabled.
<b>Sensorless Stall Detection</b>	Check it to enable motor stall detection without sensor. The alarm/fault output will be active if it is enabled.
<b>ENA to Reset the Drive</b>	Check it to let the enable signal to reset the drive which is in error state. The drive will restart and all the error will be clear.
<b>ENA Active High</b>	Check it to set the active high for ENABLE signal.
<b>Pulse Filter Enable</b>	Check it to enable the pulse filter which smooth the command input.

## Built-in Controller for Self-test



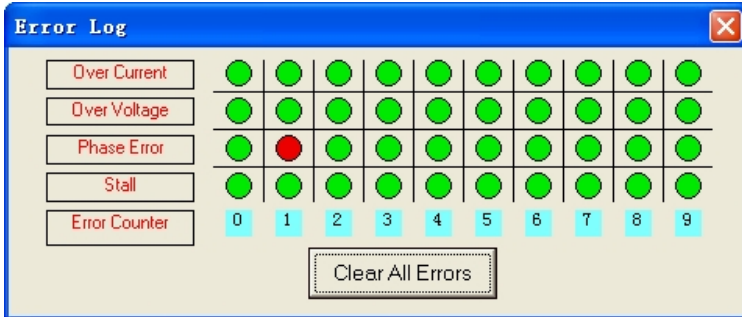
You can adjust the anti-resonance parameters in this window. The built-in controller can be used for anti-resonance tuning and self test.

Item	Description	Range
<b>The 1st Resonance Area</b>	It is usually between 0.6 to 1.2 RPS.	-
<b>Amplitude 1</b>	Amplitude adjustment for the 1 <sup>st</sup> anti-resonance area. The user can enter a value directly in the text box or move the slider bar back and forth to get an optimum value.	0 – 3500
<b>Phase 1</b>	Phase adjustment for the 1 <sup>st</sup> anti-resonance area. The user can enter a value directly in the text box or move the slider bar back and forth to get an optimum value.	0 – 1608
<b>The 2nd Resonance Area</b>	It is usually between 1.2 to 2.4 RPS.	-
<b>Amplitude 2</b>	Amplitude adjustment for the 2 <sup>nd</sup> anti-resonance area. The user can enter a value directly in the text box or move the slider bar back and forth to get an optimum value.	0 – 3500

<b>Phase 2</b>	Phase adjustment for the 2 <sup>nd</sup> anti-resonance area. The user can enter a value directly in the text box or move the slider bar back and forth to get an optimum value.	0 – 1608
<b>The 3rd Resonance Area</b>	It is usually between 2.4 to 4.8 RPS.	-
<b>Amplitude 3</b>	Amplitude adjustment for the 3 <sup>rd</sup> anti-resonance area. The user can enter a value directly in the text box or move the slider bar back and forth to get an optimum value.	0 – 256
<b>Phase 3</b>	Phase adjustment for the 3 <sup>rd</sup> anti-resonance area. The user can enter a value directly in the text box or move the slider bar back and forth to get an optimum value.	0 – 256
<b>Speed</b>	Display the current speed when you move the slider.	0-20 RPS
<b>Acceleration</b>	Acceleration of Built-in Controller.	1-65535
<b>Interval Time</b>	Interval between the positive and negative move.	1-65535
<b>Repeat</b>	Repeat times.	1-65535
<b>Motor Moving Direction</b>	If it is positive, the motor moves only in positive direction. If it is positive and negative, the motor moves in both positive and negative direction.	-
<b>Start</b>	Click to start the motion.	

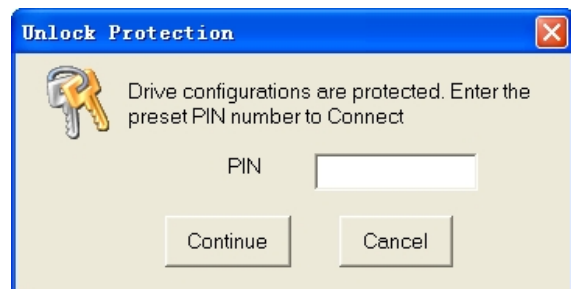
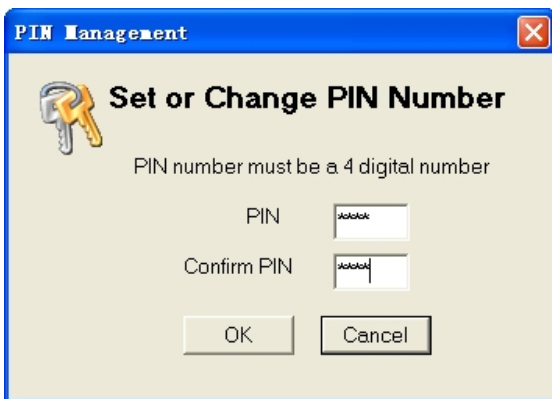
## Error Log Window

Click **Tool->Error Log** to open the error log window. This window shows both the present status of each error event and their history.



Item	Description
Over Current	The motor coil current exceeds the output limit of the drive.
Over Voltage	The input voltage exceeds the input limit of the drive.
Phase Error	Wrong motor coil connection or one of the motor lead is disconnected.
Stall	The motor has been stalled.
Clear All Errors	Clear the error log.

## PIN Management Window



Every EM drive has a 4-digit PIN (Personal Identification Number). The default PIN is 0000. If you don't want the drive's configuration from read by others, set or change the PIN number in this window. Next time the software communicates with the drive, it requires the operator to enter the PIN number. If you forget the PIN, the only way to communicate with the drive again is resetting the drive by clicking **Drive->Reset Drive**. The PIN will be 0000 again and all the data is reset to factory setting.

## Configuring the Drive

If it is the first time setup, you can follow the steps below to configure the drive.

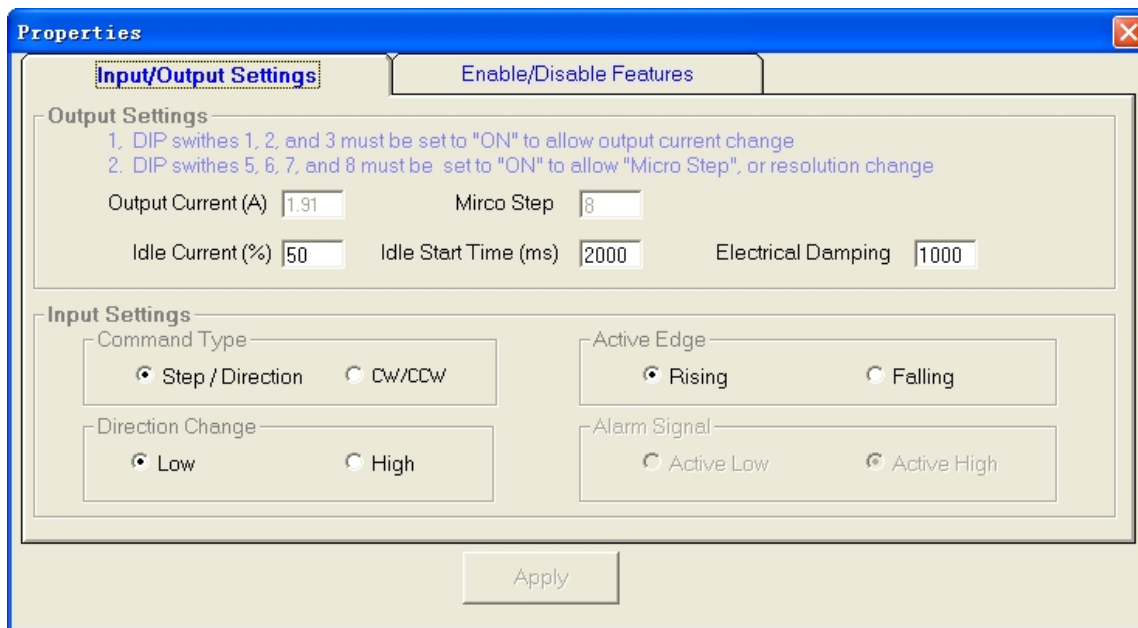
- 1) Set Input/Output parameters like output current, Micro Step and command type according to the motor and application.
- 2) Tune the current loop parameters with the connected motor.
- 3) Tune the anti-resonance parameters if necessary.
- 4) Adjust the electronic damping when the high speed performance is not good.



The motor must be connected to the drive before trying to configure the drive.

## Set Input/Output Parameters

Click Drive->Properties to open the Property window. You can set the Output Current, Micro Step and Command Type.



In most of the application, it is required to set only the output current, Micro Step and Command. Usually, the motor manufacturer states the RMS (root mean square) current in datasheet. Please refer to the hardware installation manual for how to set the output current.



1. DIP switch must be in Default mode (SW1, 2, for EM402 and SW1, 2, 3 for the others) to allow current change.
2. DIP switch must be in Default mode (SW4, 5 for EM402, SW5, 6, 7, 8 for EM503 and EM705, SW5, 6, 7 for EM806) to allow Micro Step change.
3. The EM402 and EM806 only support step & direction command.

High resolution Micro Step makes the motor move more smoothly. Low Micro Step resolution reduces the high frequency requirement to the controller. See the EM drives hardware installation manual for more information for how to select the Micro Step.

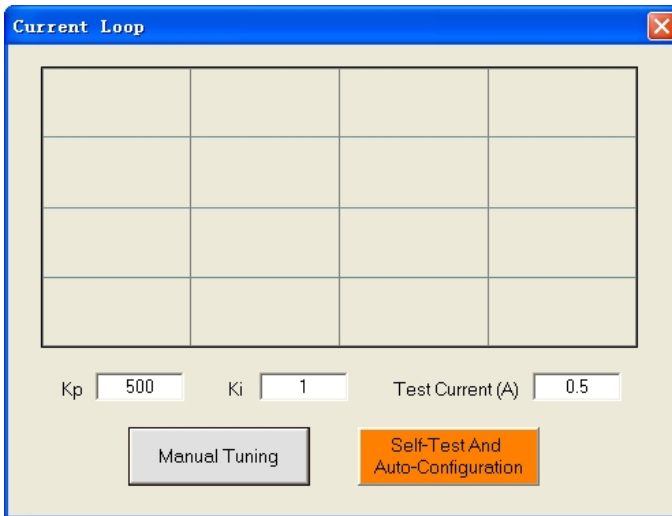
## Current Loop Tuning

The current loop parameter needs to be tuned before normal for optimize responses with different motors. Otherwise motor will be easily stalled or howls at power-up. Below is the tuning process of EM705 for a NEMA 23 motor with 24VDC supply voltage.



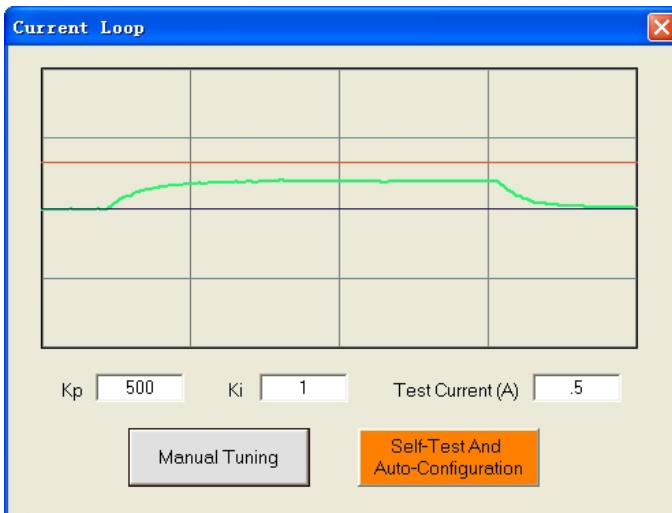
Before trying to tune the current loop parameters, select “custom” in the motor selection table for the rotation switch. Please note that change of motor requires re-power of drive.

**Step 1:** Set **Test Current** 0.5 and start the tuning with small **Kp** and “zero” **Ki**. Here we set **Kp=500** and **Ki=1**.



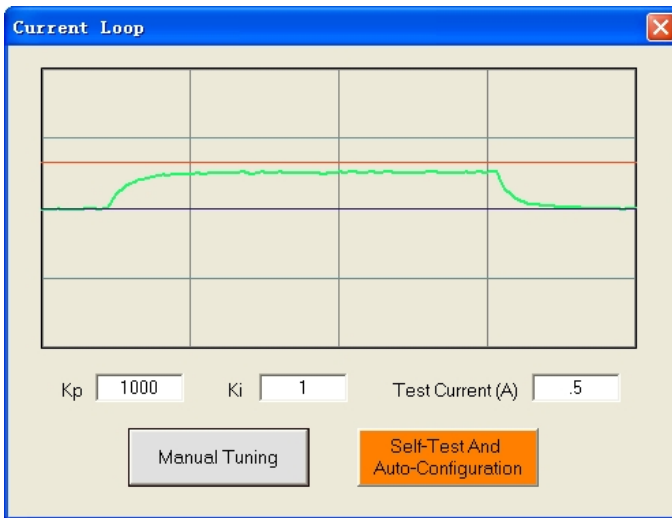
Initial Value  
**Kp = 500**  
**Ki = 1**

**Step 2:** Click the **Test** button and the plot window will show two curves. The red curve is target current and the green curve is actual current. There is large gap between them in the scope. It indicates that a large **Kp** needs to be introduced.



Start Test:  
**Kp = 500**  
**Ki = 1**

**Step 3:** Increase **Kp** to 1000 and click **Start**. The gap between target value and actual value is smaller but a higher **Kp** is still needed.

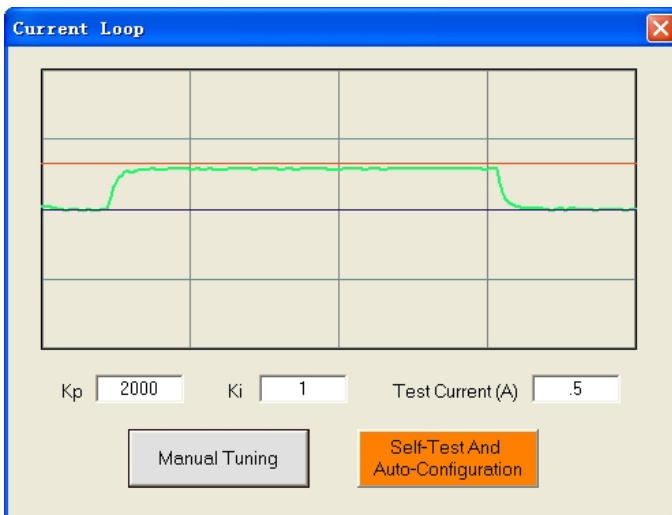


↑ Proportional Gain:

**Kp = 1000**

**Ki = 1**

**Step 3:** Give **Kp** 2000, 3000, 4000 and click **Manual Tuning**, respectively. The green curve is getting more and more close to the red curve. Over-shoot is obvious when we increase **Kp** to 4000. It indicates that you need to stop increasing **Kp** and back off. Our purpose is to make the green curve (the actual current) a little higher than the red curve (the target). So we decrease **Kp** to 3700 until the actual value is exactly over the target value.

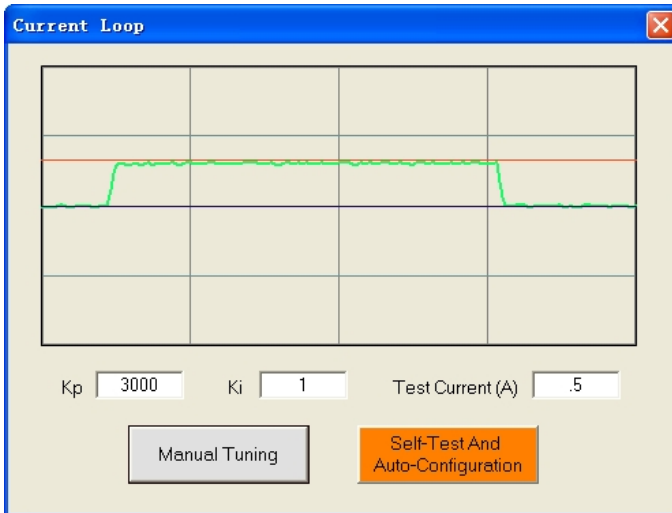


↑ Proportional Gain:

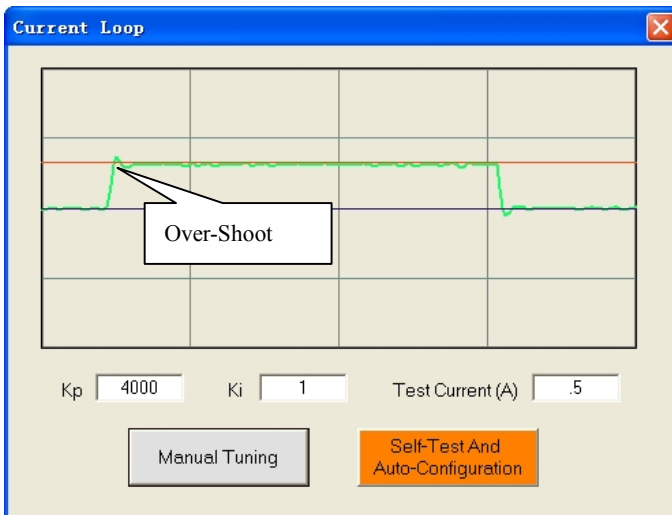
**Kp =2000**

**Ki = 1**

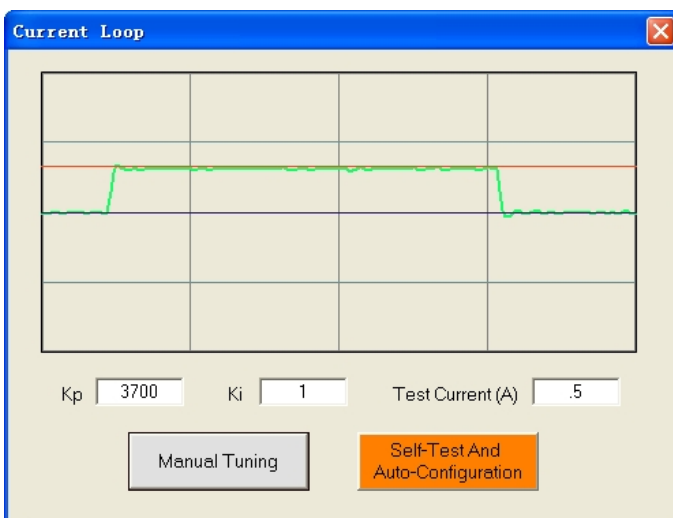




↑ Proportional Gain:  
 **$K_p = 3000$**   
 **$K_i = 1$**

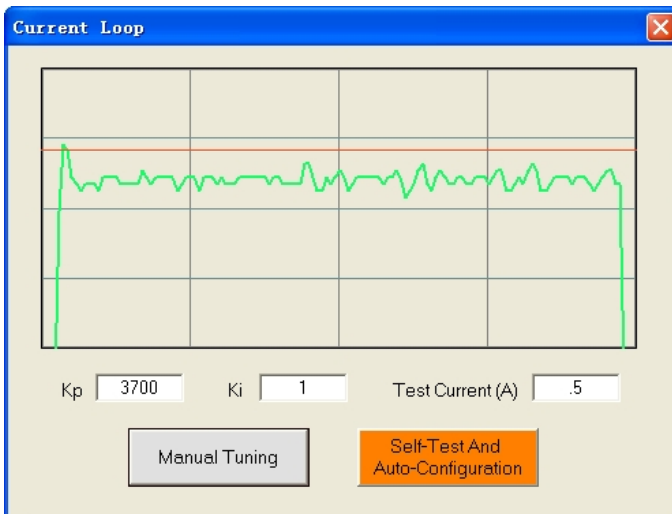
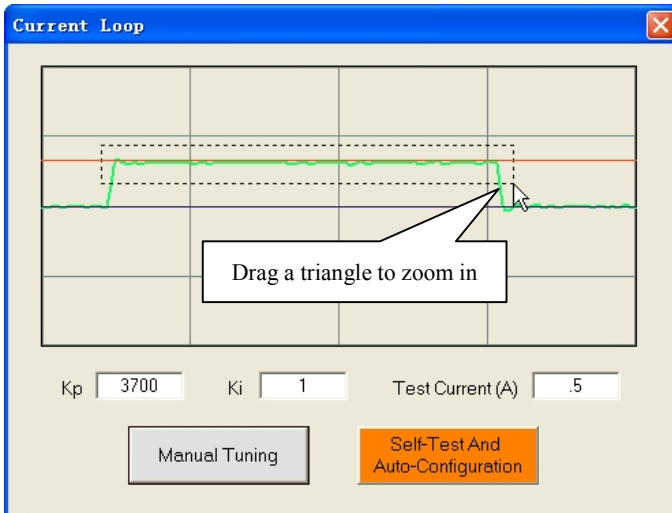


↑ Proportional Gain:  
 **$K_p = 4000$**   
 **$K_i = 1$**



↓ Proportional Gain:  
 **$K_p = 3700$**   
 **$K_i = 1$**

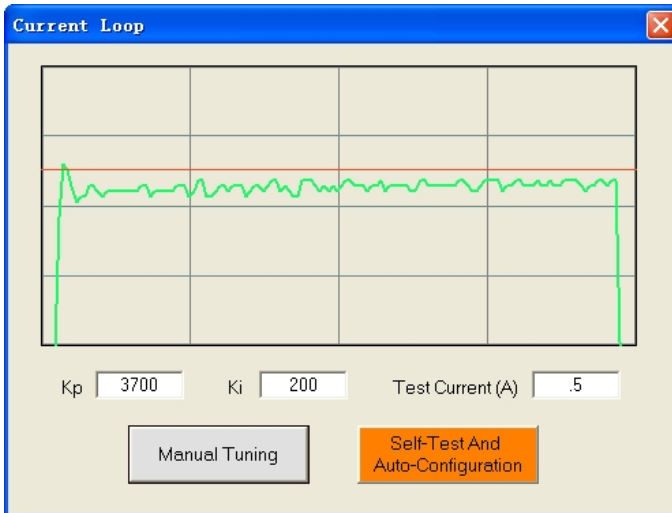
**Step 4:** Now the **Kp** is relatively good enough. But there is still gap between the green curve and the red curve when we use the mouse to zoom in the green curve. So we need to introduce **Ki** to reduce the “gap” or steady error at the constant part. It follows the same procedure as **Kp**. High **Ki** causes big vibration, system lag and makes the performance worse. The following figures show how to tune the integral gain.



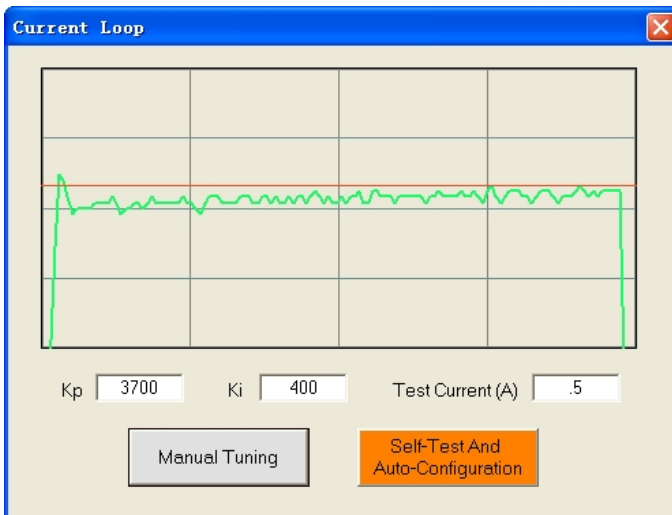
Zero Integral Gain:

**Kp = 3700**

**Ki = 1**

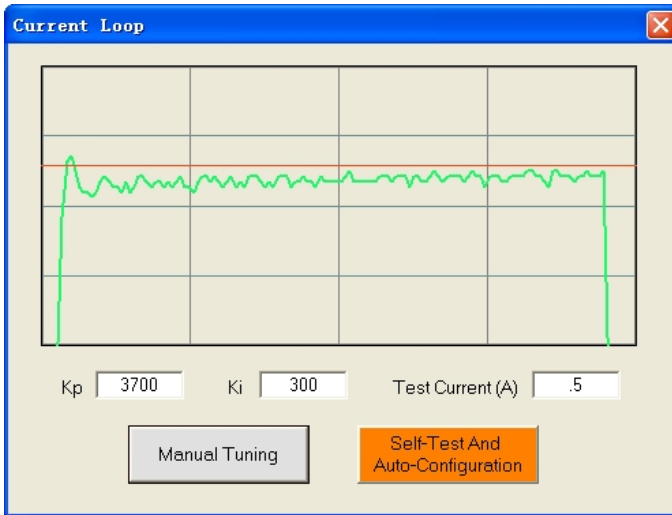


↑ Integral Gain:  
**Kp =3700**  
**Ki = 200**



↑ Integral Gain:  
**Kp =3700**  
**Ki = 400**

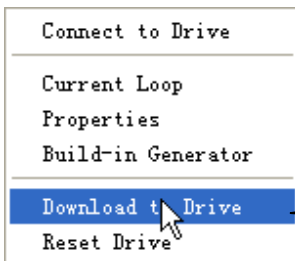
**Step 5:** The current loop tuning is basically finished. You can continue to adjust Kp and Ki for better performance. Now the updated Kp and Ki is just stored in the driver's RAM. They will be lost when we power off the driver. **Don't forget to click Drive->Download To Drive to store the changed value to the drive's EEPROM.**



Further Adjustment:

**Kp =3500**

**Ki = 300**



Save all the changes to the drive's non-volatile nonvolatile memory. You need to close the current tuning window firstly.

## Anti-resonance Tuning

Stepper motors are highly resonant, which results in vibration and ringing. The ringing utilizes a large fraction of the motor's available torque – thereby wasting performance. Furthermore, at mid-range velocities, the resonance can become so severe that the motor loses synchronization and stalls. The EM drive provides robust anti-resonance control to stop the vibrations and maintain equilibrium. This feature requires that the drive be configured with respect to the total inertia in the system. If set improperly, the effectiveness of the feature may be diminished.



1. For most of the application, it is not needed to tune EM drive anti-resonance parameters. We only recommend the advance user to use this function as it is a boring process.
  2. In most of the case, only the tuning of the 1<sup>st</sup> and 2<sup>nd</sup> anti-resonance area has obvious effect.
- 

**Step 1:** Start the motion test by clicking **Start/Stop** button. Find a resonance speed by slightly moving the slider bar of internal pulse generator back and forth. You can also use the arrow keys to adjust the speed precisely.

**Step 2:** Run the motor at the resonance speed and verify the motor smoothness. You may find a better smoothing value by slightly moving the slider bars of **Amplitude** and **Phase** back and forth.

It is very important to make the **Amplitude** and **Phase** adjustments at the proper test speeds with an unloaded motor. Running at an incorrect test speed will not excite the motor at its peak resonance, making it more difficult to find proper adjustment values. Optimum **Amplitude** and **Phase** values may be a little different between running the tests with an unloaded motor and a load motor.

**Step 3:** Keep the motor running at the resonance speed and verify the motor smoothness. You may find a better smoothing value by slightly moving the slider bars of **Amplitude** and **Phase** back and forth. If the motor speed is 0.6-1.2RPS, you should tune the Amplitude and Phase at the 1<sup>st</sup> resonance area. The 2<sup>nd</sup> resonance area is 1.2-2.4 RPS and the 3<sup>rd</sup> resonance area is 2.4-4.8 RPS.

For example, we find a resonance speed at 0.98 rps. We begin to move the Amp1 slider forth and the motor vibration and noise became lower and lower. Finally we find the move is the smoothest when **Amplitude 1** is 3300. The motor vibration and noise increase if **Amplitude 1** exceeds 3300. Then we follow the same procedure to search the best point for **Phase 1**. See Figure 26. Anti-resonance tuning is done.

**Step 4:** Click **Drive->Download To Drive** to save all the parameters to EM drive's nonvolatile memory.

## Adjusting Electronic Damping

The factory setting for the electronic damping is 1000. If the motor is easily stalled and generates odd noise at middle speed, you can try other values such as 500, 1500, 2000, 2500.

## Contact Us

### China Headquarters

**Address:** Floor 11, Block A3, iPark 1001 Xueyuan Blvd., Nanshan District, Shenzhen, Guangdong, China

**Web:** <http://www.leadshine.com>

### Sales Hot Line:

**Tel:** 86-755-2641-7674 (for Asia, Australia, Africa areas)

86-755-2640-9254 (for Europe areas)

86-755-2641-7617 (for Europe areas)

**Fax:** 86-755-2640-2718

**Email:** [sales@leadshine.com](mailto:sales@leadshine.com).

### Technical Support:

**Tel:** 86-755-2641-8447, 86-755-2641-8774, 86-755-2641-0546

**Fax:** 86-755-2640-2718

**Email:** [tech@leadshine.com](mailto:tech@leadshine.com)(for All)

### Leadshine U.S.A

**Address:** 25 Mauchly, Suite 318 Irvine, California 92618

**Tel:** 1-949-608-7270

**Fax:** 1-949-608-7298

**Web:** <http://www.leadshineUSA.com>

**Email:** [sales@leadshineUSA.com](mailto:sales@leadshineUSA.com) and [support@leadshineUSA.com](mailto:support@leadshineUSA.com).